

Peak Report TIC

Peak#	R.Time	Height	Height%	Area	Area%
1	9.085	12325	1.55	16238	1.46
2	9.931	781515	98.45	1095517	98.54
		793840	100.00	1111755	100.00

Peak Report TIC

Peak#	R.Time	CAS#	Name	Similarity (%)
1	9.085	0-0-0		0
2	9.931	0-0-0		0

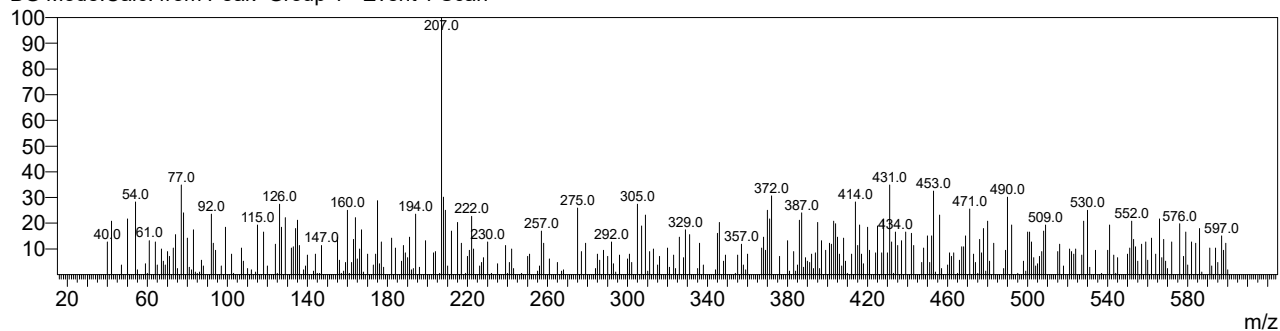
Spectrum

Line#:1 R.Time:3.380(Scan#:77)

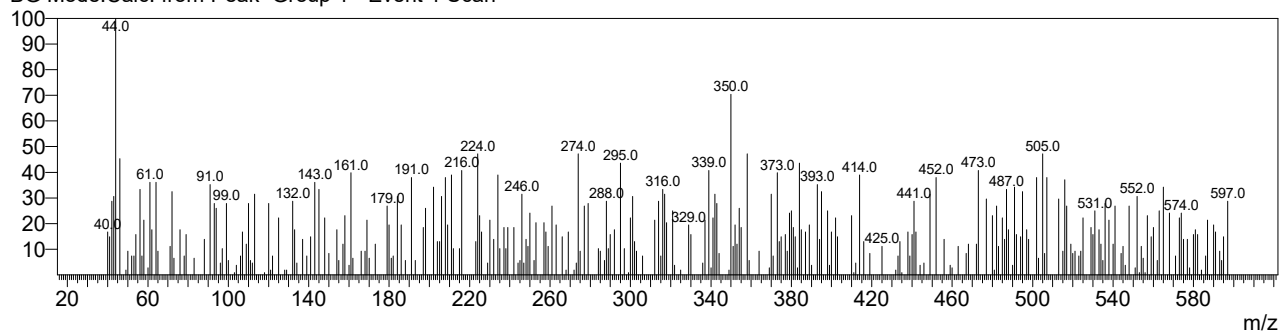
MassPeaks:332

RawMode:Averaged 3.375-3.385(76-78) BasePeak:207(212)

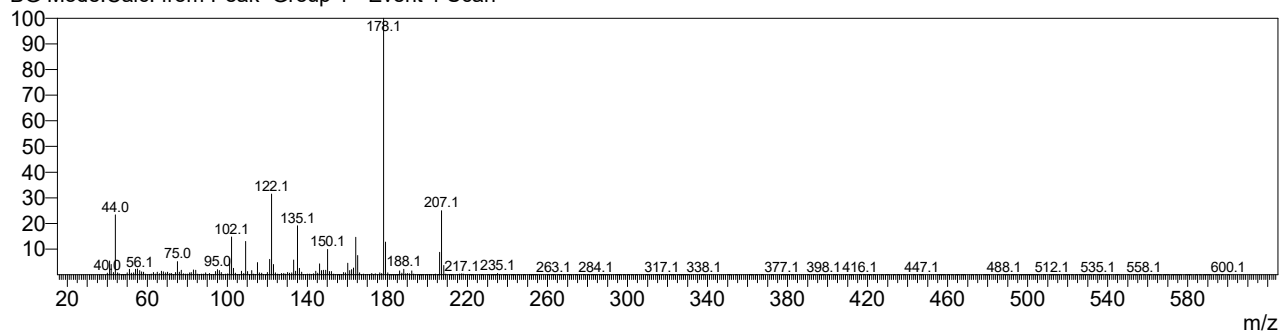
BG Mode:Calc. from Peak Group 1 - Event 1 Scan



Line#:2 R.Time:4.480(Scan#:297)
MassPeaks:303
RawMode:Averaged 4.475-4.485(296-298) BasePeak:44(108)
BG Mode:Calc. from Peak Group 1 - Event 1 Scan



Line#:3 R.Time:9.930(Scan#:1387)
MassPeaks:367
RawMode:Averaged 9.925-9.935(1386-1388) BasePeak:178(165533)
BG Mode:Calc. from Peak Group 1 - Event 1 Scan



Line#:4 R.Time:20.545(Scan#:3510)
MassPeaks:325
RawMode:Averaged 20.540-20.550(3509-3511) BasePeak:282(94)
BG Mode:Calc. from Peak Group 1 - Event 1 Scan

